

# ALIZE 3000

Generating set

ALIZE 3000 PORTABLE POWER GENERATING SET.



### 1 Is the fuel level high enough?

**yes**

Go to question 2



**no**

Using a funnel and a jerrican, fill with fuel. Make sure that the filter stays in place during this operation.



### 2 Are the petrol switch and tap open?

**yes**

Go to question 3.



**no**

Set the switch to 1 and open the tap.



### 3 Is there enough oil in the engine?

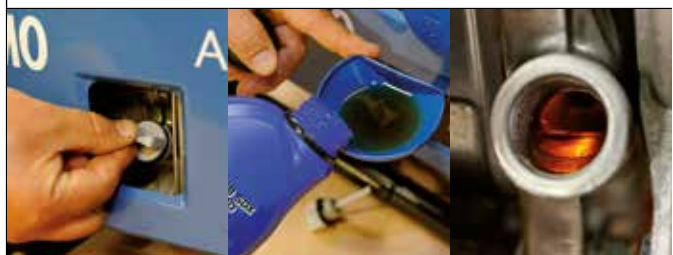
**yes**

Go to question 4.



**no**

With a funnel, add oil up to the mark indicated on the casing.



# ALIZE 3000

Generating set

ALIZE 3000 PORTABLE POWER  
GENERATING SET.



## 4 Is the spark plug in good working order?

**yes**

Go to  
question 5



**no**

Remove the side cover with a tube wrench. Use a spark plug wrench to replace the spark plug.



## 5 Does the petrol reach the carburettor?

**yes**

Your genset  
is ready  
for start-up

**no**

Check using a flat screwdriver.  
If the petrol does not reach  
the carburettor, return your  
genset to the ASS.

