

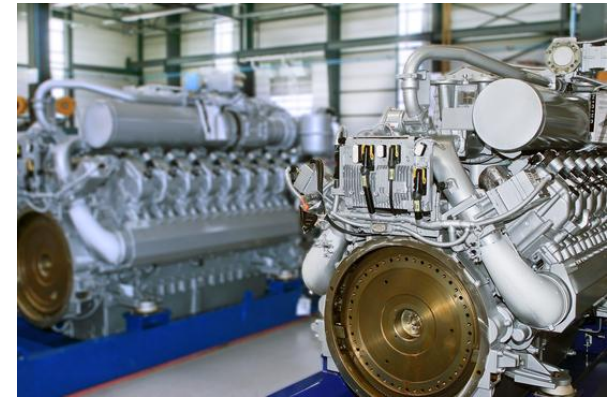
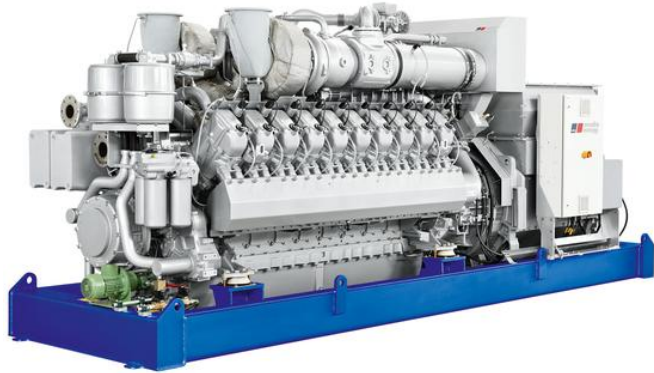


Cogeneration



Energy Solutions Provider

Engine range MTU >1 MW



Power				Efficiency			Engine				
Genset type	Fuel kWh NCV	Thermal kW 70/90°C	Electrical* kWe Alternator	Thermal %	Electrical %	Overall %	Engine type	Bore mm	Stroke mm	Cubic capacity Litres	Number of cylinders
GXC1200	2845	1313	1159	45.67	40.3	85.99	12V4000L62	170	210	57.2	12 V
GXC1550	3811	1746	1554	45.81	40.77	86.58	16V4000L62	170	210	76.27	16 V
GXC1950	4800	2224	1936	46.33	40.33	86.67	20V4000L62	170	210	95.32	20 V

*Alternator terminal power at $\cos \phi$ 0.9 – variable depending on the alternator used.

COP service requirements in accordance with ISO 8528/1 and reference conditions in accordance with ISO 3046/1

Information about higher power models available on request

Methane index $Mz > 70$